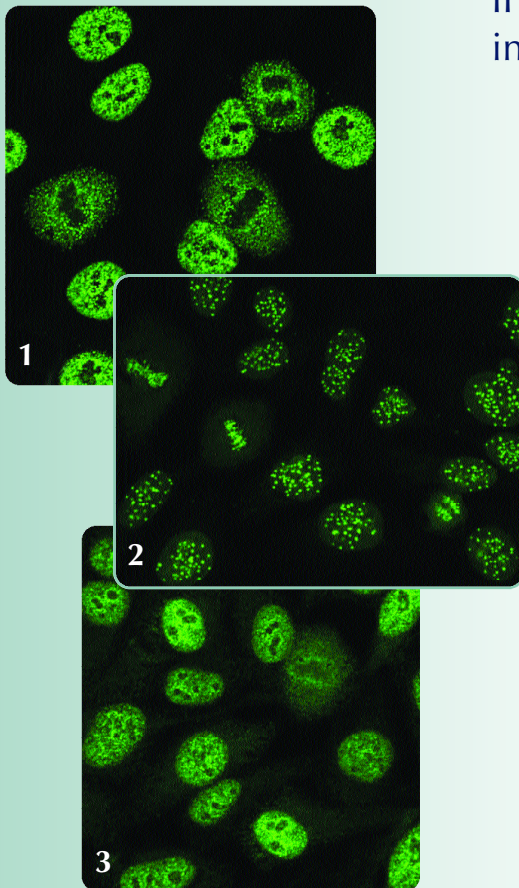


# HEp-2 IFA - Detection of Anti-Nuclear Antibodies (ANA)

HEp-2 cells as an immunofluorescence assay (IFA) substrate provide a valuable test for the screening and titration of circulating ANA in human serum.

This aids the laboratory diagnosis and monitoring of systemic lupus erythematosus (SLE), rheumatoid arthritis and other connective tissue disorders.

The Binding Site offers a complete range of HEp-2 IFA reagents optimised for reliable and easy interpretation of ANA.



- Sheep anti-human IgG fluorescein conjugated antibody optimised for staining clarity and minimal background.
- High sensitivity for interpretation of classical patterns including anti SSA/Ro staining.
- Cells in various stages of mitosis are clearly visible for easy pattern interpretation.
- 5, 10, 12 and 24 well slide configurations.
- Available either as complete kits or individual components for flexibility and ease of use.
- Automation friendly slide format.

*The Binding Site HEp-2 assays are also available with AIM™ Technology - a sensitive, time saving system using conjugated antiserum coated onto paper strips. [www.bindingsite.co.uk](http://www.bindingsite.co.uk)*

1. Coarse speckled pattern.
2. Anti-centromere pattern.
3. Typical speckled pattern of anti-SSA/Ro.

AIM™ is a trademark of The Binding Site Ltd, Birmingham, UK.



# Binding Site HEp-2 assays are simple to use

## PROCEDURE SUMMARY

1. Allow mounting medium and slides to reach room temperature. Prepare phosphate buffered saline.

*Liquid components are supplied ready to use, in plastic bottles.*

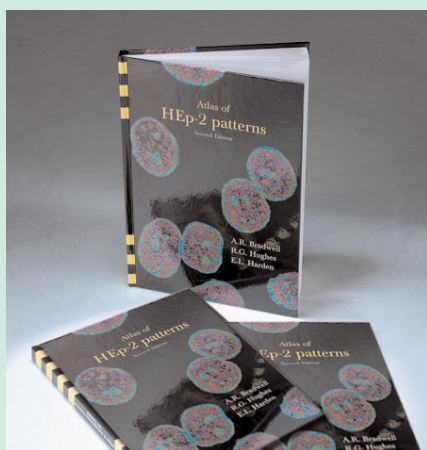
2. Patient samples and controls are diluted as appropriate prior to incubation with the HEp-2 substrate.

*All incubation times are standardised to 20 minutes, permitting speed in sample processing without loss of sensitivity.*

3. Slides are washed to remove unreacted antibodies, then fluorescein-conjugated antibody is applied.

*The performance of the fluorescein conjugate is optimised to give clarity of staining and minimal background.*

4. Unbound conjugate is removed by washing and slides are viewed using a fluorescence microscope. Apple-green fluorescence corresponds to areas of the HEp-2 cell where autoantibody has bound.



A comprehensive atlas of HEp-2 patterns is available to aid interpretation

# Binding Site HEp-2 reagents in flexible formats

**HEp-2 Slides** - choose from 5 well, 10 well, 12 well and 24 well slide formats (24 well slides available only in slide packs).

**Phosphate Buffered Saline** - provided as a 20-fold concentrate in liquid form for ease of storage. Buffer can be diluted in bulk and stored at 2-8°C for one month.

**Conjugate** - prediluted, affinity purified sheep antibodies to human IgG whole molecules, optimally labelled with fluorescein will react predominantly with IgG but also bind to light chains of other immunoglobulin classes.

**Mounting Medium** - especially formulated for immunofluorescence microscopy, contain anti-fading agents.

**Controls** - monospecific positive and negative prediluted controls.

**Evans Blue** - available either to add to final wash or already incorporated into conjugated antibody.

Kits have a shelf life of 12 months from date of manufacture when stored at 2-8°C.

## ORDERING INFORMATION

DESCRIPTION	WELL	CODE
HEp-2 IFA Complete Kits	10 x 5	FK001.1
	25 x 10	FK001.2
	20 x 12	FK001.6
	100 x 12	FK001.7
HEp-2 IFA Kit with Evans Blue in conjugate	25 x 10	FK001.2.E
	20 x 12	FK001.6.E
	100 x 12	FK001.7.E
HEp-2 IFA Individual Slides	10 x 5	FS001.1
	25 x 10	FS001.2
	100 x 10	FS001.3
	20 x 12	FS001.6
	100 x 12	FS001.7
	100 x 24	FS001.5

Please refer to The Binding Site Clinical Products Catalogue or website for full details of slides, conjugates, controls or ask your local representative for more details.

MKG302

PRINTED IN ENGLAND  
April 06

THE BINDING SITE LTD.

PO BOX 11712, BIRMINGHAM, B14 4ZB, UK.

Tel: +44 (0)121 436 1000 Fax: +44 (0)121 430 7061 [www.bindingsite.co.uk](http://www.bindingsite.co.uk)

